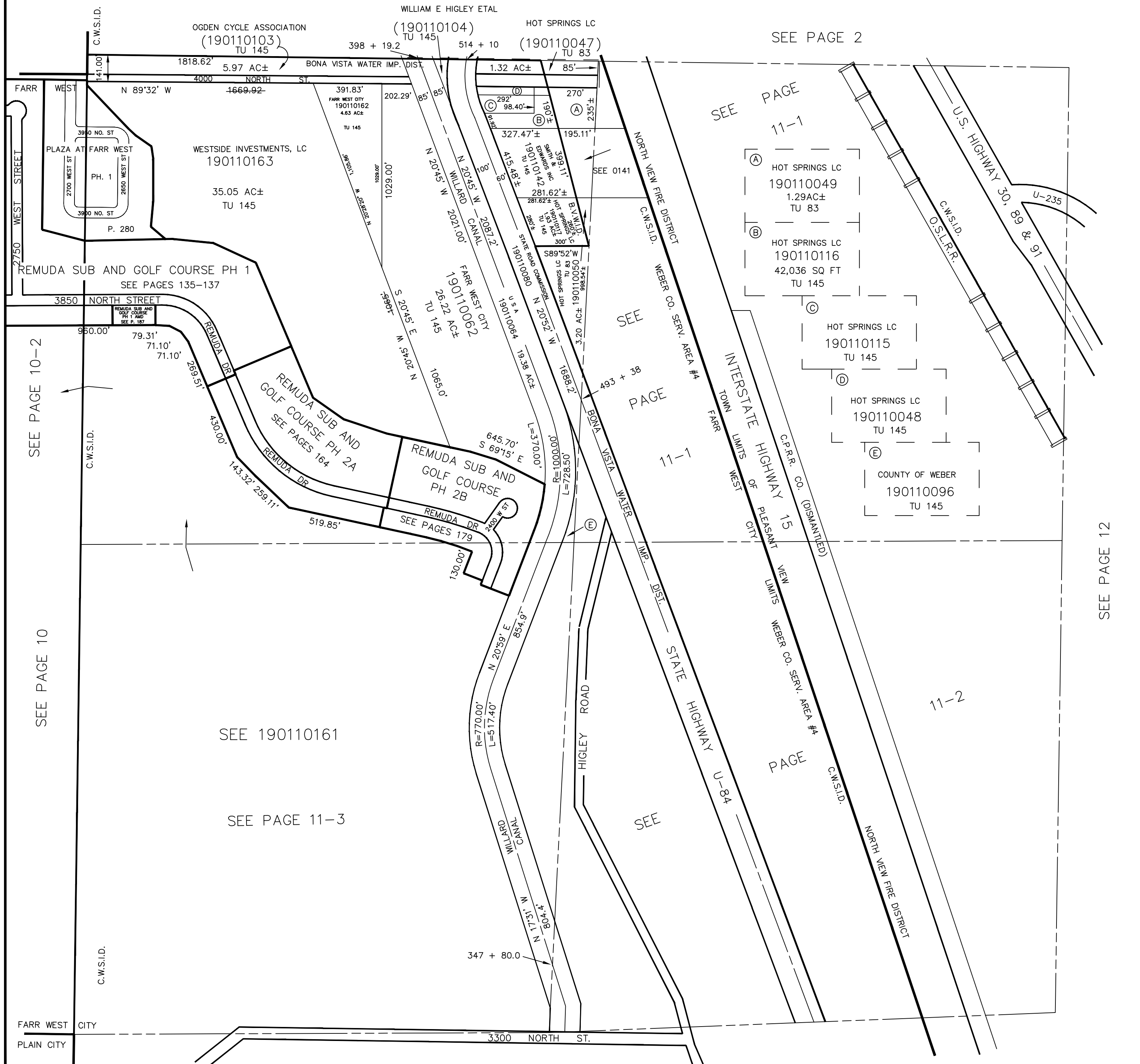


SECTION 23, T.7N., R.2W., S.L.B. & M.

TOWN OF PLEASANT VIEW & FARR WEST CITY

TAXING UNITS: 83, 145

SCALE 1" = 400'



SEE PAGE 2

SEE PAGE 11-1

- (A) HOT SPRINGS LC
190110049
1.29AC±
TU 83
- (B) HOT SPRINGS LC
190110116
42,036 SQ FT
TU 145
- (C) HOT SPRINGS LC
190110115
TU 145
- (D) HOT SPRINGS LC
190110048
TU 145
- (E) COUNTY OF WEBER
190110096
TU 145

SEE PAGE 11-1

SEE PAGE 12

SEE PAGE 10-2

SEE PAGE 10

SEE 190110161

SEE PAGE 11-3

SEE

SEE PAGE 17